

## The Most Popular Consumer Uses for Dry Ice

**Food and Drinks:** Dry ice is the best way to freeze food and carbonate beverages quickly. Dry ice is also a creative and unique way to make ice cream with a twist.

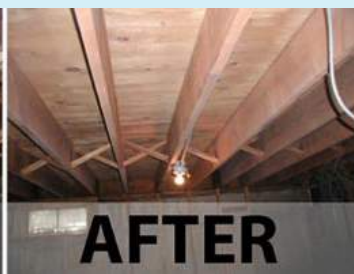
**Emergencies:** One of the most useful ways to utilize dry ice is when the power goes out. Dry ice can keep items from a refrigerator or freezer ice cold for up to 3 days in the proper cooler!

**Picnics and Camping:** Dry ice doesn't just keep things cold when it's an emergency, it also does a remarkable job keeping picnic and camping foods chilled until you're ready to eat. Anything from ice cream to lunch meat can stay cold thanks to dry ice.

**Halloween:** Do you want to have an extra-spooky Halloween this year? Put some dry ice into a cauldron or other metal container and add some hot water for a scary smoke that will float all over the front yard.

**Dry Ice Blasting:** This cleaning method is an incredibly effective and eco-friendly way of cleaning manufacturing and industrial equipment without needing to take it apart and put it back together again. Dry ice blasting is gentle but also thorough. It can

also easily remove residues such as oil, paint, ink, mold, and anything else you can imagine.



**BEFORE**

**AFTER**



**COASTALWS.COM**

### **BEAUMONT**

25 N. Fourth Street  
(409) 838-3757

### **BAYTOWN**

1205 W. Main  
(281) 422-9418

### **FREPORT**

2102 N. Brazosport Blvd.  
(979) 233-3900

### **GROVES**

5801 39th Street  
(409) 963-2500

### **HOUSTON**

5101 Tacoma Drive  
(713) 896-8855

### **JASPER**

4688 N. Wheeler Street  
(409) 384-5459

### **LIBERTY**

205 Georgia Street  
(936) 336-3452

### **ORANGE**

4577 Highway 87 S.  
(409) 735-3400

### **SILSBEE**

325 W. Highway 327  
(409) 385-2100

### **SULPHUR**

2045 Swisco Road  
(337) 625-2055

**FOR MORE INFORMATION**

**CALL 800.852.4177**

For general inquiries, email  
[info@coastalws.com](mailto:info@coastalws.com)

## **Safety Warnings**

If handled correctly, dry ice is perfectly safe for personal leisure use.

- » Not for human consumption
- » Handle only with protective gloves
- » Transport only in complete isolation from driver and in a well ventilated vehicle
- » Do not place dry ice in any gas-tight container
- » Keep away from children and pets (adult supervision is required)



**YOUR COLD  
SOLUTION  
TO SAVINGS!**

**- COMMERCIAL -**

# WHAT ARE DRY ICE PELLETS?

Dry Ice is the solid form of carbon dioxide (CO2). It's called "dry ice" because it does not melt like wet ice. Instead, dry ice converts into carbon dioxide gas. Because dry ice is extremely cold (-109°F/-78.5°C), non-toxic, and completely dry, the pellets we produce are easy to spread in coolers and ideal for keeping your food and drink at a cold and safe temperature for extended periods of time. **Pellet sizes: 3MM and 16MM**



## COOL Dry Ice Usages

- » Keep Perishables Fresh on Trips
- » Emergency Use During Power Outages for Refrigerators and Freezers
- » Dry Ice Blasting/Cleaning
- » Specialty Drinks & Food Presentation
- » Event Special Effects
- » Halloween Fun
- » Educational Experiments
- » Get Rid of Household Pests
- » Cold Caps for Chemotherapy Patients
- » Freeze Branding Cattle
- » Make Mosquito Traps
- » Speed Asphalt Cooling
- » Fix Car Dent

## SUGGESTED PACKING CHART FOR FROZEN FOOD

Weight of Frozen Food	TRAVELTIME				
	6 Hours	18 Hours	24 Hours	2 Days	3 Days
5-10 LBS	5-10 LBS Dry Ice	10-12 LBS Dry Ice	12-15 LBS Dry Ice	25 LBS Dry Ice	25-30 LBS Dry Ice
20 LBS	10-12 LBS Dry Ice	12-15 LBS Dry Ice	12-15 LBS Dry Ice	25 LBS Dry Ice	25-30 LBS Dry Ice
50 LBS	12-15 LBS Dry Ice	18-20 LBS Dry Ice	20 LBS Dry Ice	30 LBS Dry Ice	30-35 LBS Dry Ice

Place food on bottom; dry ice on top

*\*This chart is an ESTIMATE only.*

### Dry Ice is a Huge Saving Solution During a Power Outage

At -109 degrees F, dry ice can replace the cooling power of a refrigerator or freezer. During a power outage, place dry ice on the top shelf of the freezer and the bottom shelf of the refrigerator. In a standard freezer, you will need 25-30 pounds of dry ice to keep food frozen for one day.

### Big or Small...Coastal Dry Ice Always Delivers!

*Optimum dry ice logistics requires optimum storage of dry ice*

Coastal's Dry Ice division offers various types of dry ice storage possibilities to minimize sublimation loss and keep the dry ice in best condition.

The Coastal Dry Ice Container AT240W is made of polyethylene with foam filled cavities & guarantees excellent insulation values. The integrated securable wheels allow for easy handling wherever the dry ice container is needed.

Specifications: **Full capacity: 400 lbs.**, Average storage loss: approx. 4.0 %/day



The lightweight Coastal Dry Ice Box AT126 is the ideal solution when smaller quantities of freshly produced dry ice must be ready to use. It is made of expanded polypropylene which guarantees excellent insulation values. This dry ice box is suitable to store dry ice pellets as well as dry ice blocks.



Specifications: **Full capacity: 200 lbs.**, Average storage loss: approx. 7.4 %/day

## 7 REASONS TO USE DRY ICE FOR OUTDOOR ADVENTURES

- » **Reliable:** It's ideal to keep food frozen for periods of four days and longer without electricity.
- » **Inexpensive:** There is no need for expensive bulky freezers.
- » **Powerful:** Dry ice is seven times more effective than water ice when it comes to cooling.
- » **Clean:** It leaves no residual dirty water in the container after the ice has melted.
- » **Ease of use:** Dry ice pellets are easy to handle and spread evenly in your cooler.
- » **Available:** We've made it easy to get your dry ice pellets at our Coastal Welding Supply locations by providing you "To Go" coolers or by filling your personal coolers on site.



*Smaller sizes are available ranging from 30-100 lbs. Contact your local store for details. We can also fill your personal cooler in store.*